

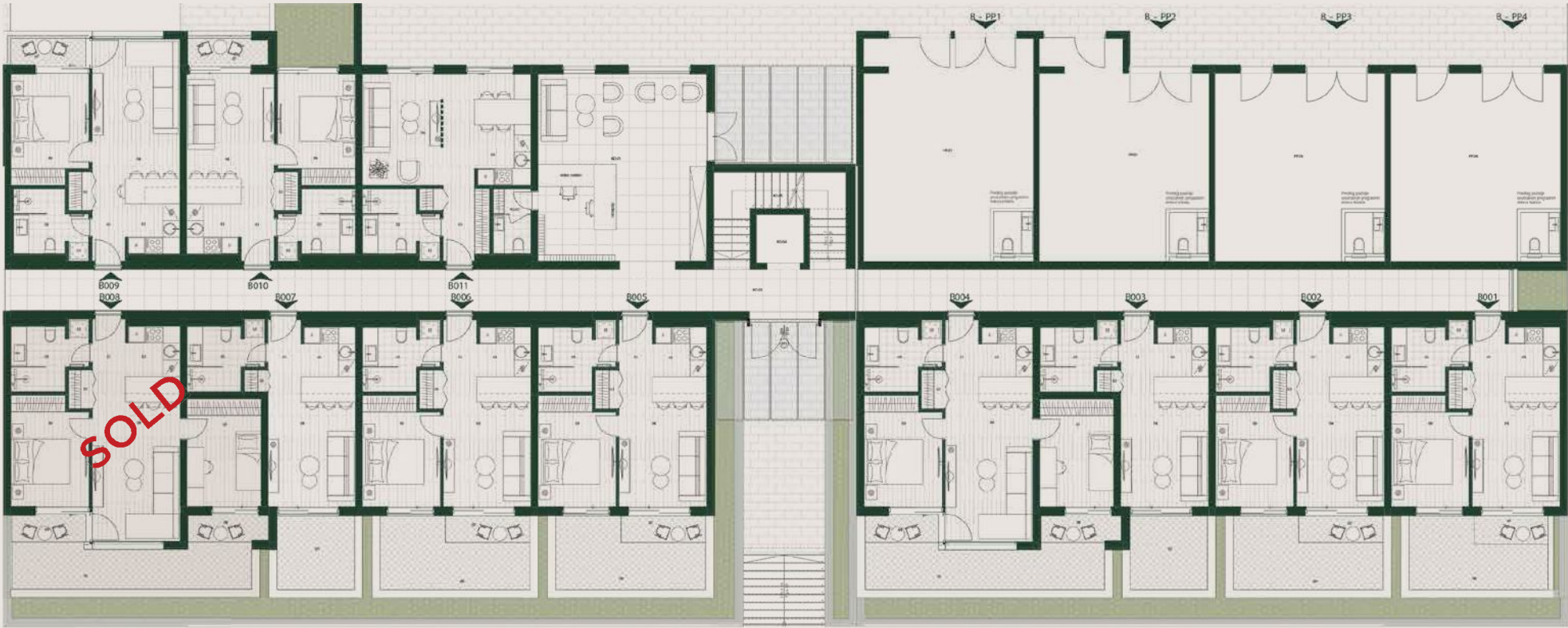




# Building B



# Building B | Ground Floor



|                     |                     |                     |                     |                     |                     |
|---------------------|---------------------|---------------------|---------------------|---------------------|---------------------|
| <b>B001   1BD</b>   | <b>B002   1BD</b>   | <b>B003   S</b>     | <b>B004   2BD</b>   | <b>B005   1BD</b>   | <b>B006   1BD</b>   |
| INTERNAL AREA (SQM) | INTERNAL AREA (SQM) | INTERNAL AREA (SQM) | INTERNAL AREA (SQM) | INTERNAL AREA (SQM) | INTERNAL AREA (SQM) |
| 40,79               | 47,24               | 27,06               | 57,46               | 41,30               | 41,24               |
| EXTERNAL AREA (SQM) | EXTERNAL AREA (SQM) | EXTERNAL AREA (SQM) | EXTERNAL AREA (SQM) | EXTERNAL AREA (SQM) | EXTERNAL AREA (SQM) |
| 11,44               | 12,24               | 7,92                | 15,32               | 12,35               | 12,24               |
| PRICE               | PRICE               | PRICE               | PRICE               | PRICE               | PRICE               |
| 153.700€            | 159.000€            | 116.600€            | 227.900€            | 159.000€            | 159.000€            |
| <b>B007   S</b>     | <b>B008   2BD</b>   | <b>B009   1BD</b>   | <b>B010   1BD</b>   | <b>B011   S</b>     |                     |
| INTERNAL AREA (SQM) | INTERNAL AREA (SQM) | INTERNAL AREA (SQM) | INTERNAL AREA (SQM) | INTERNAL AREA (SQM) |                     |
| 27,06               | 57,41               | 44,35               | 40,81               | 34,85               |                     |
| EXTERNAL AREA (SQM) | EXTERNAL AREA (SQM) | EXTERNAL AREA (SQM) | EXTERNAL AREA (SQM) | EXTERNAL AREA (SQM) |                     |
| 7,92                | 15,21               |                     |                     |                     |                     |
| PRICE               | PRICE               | PRICE               | PRICE               | PRICE               |                     |
| 116.600€            | SOLD                | 150.520€            | 137.800€            | 111.300€            |                     |

## PARKSIDE RESIDENCES BY SOLUM

DISCLAIMER: Reference to any measured area or definition is in accordance with International Property Measurement Standards (IPMS) published by the International Property Measurement Standards Coalition (IPMSC). The Net Internal Area comprises internal floor space and outdoor areas, excluding internal and external walls, and other structural elements. The Total Sellable Area encompasses all internal and external spaces, including all walls, columns and structural elements. Apartment designs and layouts presented are indicative and subject to change. The specifications are as of the brochure's preparation date and may be adjusted in accordance with permitted variances under apartment sale contracts. Floorplans are not to scale, provided for guidance only, and dimensions are approximate sizes.



# Building B | First Floor



|                     |                     |                     |                     |                     |                     |
|---------------------|---------------------|---------------------|---------------------|---------------------|---------------------|
| <b>B101   2BD</b>   | <b>B102   S</b>     | <b>B103   1BD</b>   | <b>B104   1BD</b>   | <b>B105   1BD</b>   | <b>B106   1BD</b>   |
| INTERNAL AREA (SQM) | INTERNAL AREA (SQM) | INTERNAL AREA (SQM) | INTERNAL AREA (SQM) | INTERNAL AREA (SQM) | INTERNAL AREA (SQM) |
| 57,21               | 27,06               | 44,97               | 44,50               | 44,50               | 44,97               |
| EXTERNAL AREA (SQM) | EXTERNAL AREA (SQM) | EXTERNAL AREA (SQM) | EXTERNAL AREA (SQM) | EXTERNAL AREA (SQM) | EXTERNAL AREA (SQM) |
|                     |                     |                     |                     |                     |                     |
| PRICE               | PRICE               | PRICE               | PRICE               | PRICE               | PRICE               |
| 196.100€            | 100.700€            | 153.700€            | 153.700€            | SOLD                | SOLD                |

|                     |                     |                     |                     |                     |                     |
|---------------------|---------------------|---------------------|---------------------|---------------------|---------------------|
| <b>B107   S</b>     | <b>B108   2BD</b>   | <b>B109   1BD</b>   | <b>B110   1BD</b>   | <b>B111   S</b>     | <b>B112   2BD</b>   |
| INTERNAL AREA (SQM) | INTERNAL AREA (SQM) | INTERNAL AREA (SQM) | INTERNAL AREA (SQM) | INTERNAL AREA (SQM) | INTERNAL AREA (SQM) |
| 27,06               | 57,41               | 44,50               | 44,97               | 27,06               | 57,41               |
| EXTERNAL AREA (SQM) | EXTERNAL AREA (SQM) | EXTERNAL AREA (SQM) | EXTERNAL AREA (SQM) | EXTERNAL AREA (SQM) | EXTERNAL AREA (SQM) |
|                     |                     |                     |                     |                     |                     |
| PRICE               | PRICE               | PRICE               | PRICE               | PRICE               | PRICE               |
| 100.700€            | SOLD                | SOLD                | SOLD                | SOLD                | SOLD                |

|                     |                     |                     |                     |
|---------------------|---------------------|---------------------|---------------------|
| <b>B113   2BD</b>   | <b>B114   S</b>     | <b>B115   1BD</b>   | <b>B116   1BD</b>   |
| INTERNAL AREA (SQM) | INTERNAL AREA (SQM) | INTERNAL AREA (SQM) | INTERNAL AREA (SQM) |
| 57,21               | 27,06               | 45,03               | 44,50               |
| EXTERNAL AREA (SQM) | EXTERNAL AREA (SQM) | EXTERNAL AREA (SQM) | EXTERNAL AREA (SQM) |
|                     |                     |                     |                     |
| PRICE               | PRICE               | PRICE               | PRICE               |
| 196.100€            | 100.700€            | 153.700€            | 153.700€            |

## PARKSIDE RESIDENCES BY SOLUM

DISCLAIMER: Reference to any measured area or definition is in accordance with International Property Measurement Standards (IPMS) published by the International Property Measurement Standards Coalition (IPMSC). The Net Internal Area comprises internal floor space and outdoor areas, excluding internal and external walls, and other structural elements. The Total Sellable Area encompasses all internal and external spaces, including all walls, columns and structural elements. Apartment designs and layouts presented are indicative and subject to change. The specifications are as of the brochure's preparation date and may be adjusted in accordance with permitted variances under apartment sale contracts. Floorplans are not to scale, provided for guidance only, and dimensions are approximate sizes.

# Building B | Second Floor



## B201 | 2BD

|                     |       |
|---------------------|-------|
| INTERNAL AREA (SQM) | 57,21 |
| EXTERNAL AREA (SQM) |       |
| PRICE               | SOLD  |

## B202 | S

|                     |          |
|---------------------|----------|
| INTERNAL AREA (SQM) | 27,06    |
| EXTERNAL AREA (SQM) |          |
| PRICE               | 106.000€ |

## B203 | 1BD

|                     |          |
|---------------------|----------|
| INTERNAL AREA (SQM) | 44,97    |
| EXTERNAL AREA (SQM) |          |
| PRICE               | 163.240€ |

## B204 | 1BD

|                     |          |
|---------------------|----------|
| INTERNAL AREA (SQM) | 44,50    |
| EXTERNAL AREA (SQM) |          |
| PRICE               | 163.240€ |

## B205 | 1BD

|                     |          |
|---------------------|----------|
| INTERNAL AREA (SQM) | 44,50    |
| EXTERNAL AREA (SQM) |          |
| PRICE               | 163.240€ |

## B206 | 1BD

|                     |       |
|---------------------|-------|
| INTERNAL AREA (SQM) | 44,96 |
| EXTERNAL AREA (SQM) |       |
| PRICE               | SOLD  |

## B207 | S

|                     |       |
|---------------------|-------|
| INTERNAL AREA (SQM) | 27,06 |
| EXTERNAL AREA (SQM) |       |
| PRICE               | SOLD  |

## B208 | 2BD

|                     |       |
|---------------------|-------|
| INTERNAL AREA (SQM) | 57,41 |
| EXTERNAL AREA (SQM) |       |
| PRICE               | SOLD  |

## B209 | 1BD

|                     |       |
|---------------------|-------|
| INTERNAL AREA (SQM) | 44,50 |
| EXTERNAL AREA (SQM) |       |
| PRICE               | SOLD  |

## B210 | 1BD

|                     |       |
|---------------------|-------|
| INTERNAL AREA (SQM) | 44,97 |
| EXTERNAL AREA (SQM) |       |
| PRICE               | SOLD  |

## B211 | S

|                     |       |
|---------------------|-------|
| INTERNAL AREA (SQM) | 27,06 |
| EXTERNAL AREA (SQM) |       |
| PRICE               | SOLD  |

## B212 | 2BD

|                     |       |
|---------------------|-------|
| INTERNAL AREA (SQM) | 57,46 |
| EXTERNAL AREA (SQM) |       |
| PRICE               | SOLD  |

## B213 | 2BD

|                     |       |
|---------------------|-------|
| INTERNAL AREA (SQM) | 57,21 |
| EXTERNAL AREA (SQM) |       |
| PRICE               | SOLD  |

## B214 | S

|                     |          |
|---------------------|----------|
| INTERNAL AREA (SQM) | 27,06    |
| EXTERNAL AREA (SQM) |          |
| PRICE               | 106.000€ |

## B215 | 1BD

|                     |          |
|---------------------|----------|
| INTERNAL AREA (SQM) | 44,97    |
| EXTERNAL AREA (SQM) |          |
| PRICE               | 163.240€ |

## B216 | 1BD

|                     |          |
|---------------------|----------|
| INTERNAL AREA (SQM) | 44,55    |
| EXTERNAL AREA (SQM) |          |
| PRICE               | 163.240€ |

### PARKSIDE RESIDENCES BY SOLUM

DISCLAIMER: Reference to any measured area or definition is in accordance with International Property Measurement Standards (IPMS) published by the International Property Measurement Standards Coalition (IPMSC). The Net Internal Area comprises internal floor space and outdoor areas, excluding internal and external walls, and other structural elements. The Total Sellable Area encompasses all internal and external spaces, including all walls, columns and structural elements. Apartment designs and layouts presented are indicative and subject to change. The specifications are as of the brochure's preparation date and may be adjusted in accordance with permitted variances under apartment sale contracts. Floorplans are not to scale, provided for guidance only, and dimensions are approximate sizes.



# Building B | Third Floor



## B301 | 2BD

|                     |       |
|---------------------|-------|
| INTERNAL AREA (SQM) | 57,21 |
| EXTERNAL AREA (SQM) |       |
| PRICE               | SOLD  |

## B302 | S

|                     |       |
|---------------------|-------|
| INTERNAL AREA (SQM) | 27,06 |
| EXTERNAL AREA (SQM) |       |
| PRICE               | SOLD  |

## B303 | 1BD

|                     |          |
|---------------------|----------|
| INTERNAL AREA (SQM) | 44,97    |
| EXTERNAL AREA (SQM) |          |
| PRICE               | 172.780€ |

## B304 | 1BD

|                     |          |
|---------------------|----------|
| INTERNAL AREA (SQM) | 44,50    |
| EXTERNAL AREA (SQM) |          |
| PRICE               | 172.780€ |

## B305 | 1BD

|                     |          |
|---------------------|----------|
| INTERNAL AREA (SQM) | 44,50    |
| EXTERNAL AREA (SQM) |          |
| PRICE               | 172.780€ |

## B306 | 1BD

|                     |       |
|---------------------|-------|
| INTERNAL AREA (SQM) | 44,97 |
| EXTERNAL AREA (SQM) |       |
| PRICE               | SOLD  |

## B307 | S

|                     |       |
|---------------------|-------|
| INTERNAL AREA (SQM) | 27,06 |
| EXTERNAL AREA (SQM) |       |
| PRICE               | SOLD  |

## B308 | 2BD

|                     |       |
|---------------------|-------|
| INTERNAL AREA (SQM) | 57,41 |
| EXTERNAL AREA (SQM) |       |
| PRICE               | SOLD  |

## B309 | 1BD

|                     |       |
|---------------------|-------|
| INTERNAL AREA (SQM) | 44,50 |
| EXTERNAL AREA (SQM) |       |
| PRICE               | SOLD  |

## B310 | 1BD

|                     |       |
|---------------------|-------|
| INTERNAL AREA (SQM) | 44,97 |
| EXTERNAL AREA (SQM) |       |
| PRICE               | SOLD  |

## B311 | S

|                     |       |
|---------------------|-------|
| INTERNAL AREA (SQM) | 27,06 |
| EXTERNAL AREA (SQM) |       |
| PRICE               | SOLD  |

## B312 | 2BD

|                     |       |
|---------------------|-------|
| INTERNAL AREA (SQM) | 57,41 |
| EXTERNAL AREA (SQM) |       |
| PRICE               | SOLD  |

## B313 | 2BD

|                     |       |
|---------------------|-------|
| INTERNAL AREA (SQM) | 57,21 |
| EXTERNAL AREA (SQM) |       |
| PRICE               | SOLD  |

## B314 | S

|                     |       |
|---------------------|-------|
| INTERNAL AREA (SQM) | 27,06 |
| EXTERNAL AREA (SQM) |       |
| PRICE               | SOLD  |

## B315 | 1BD

|                     |       |
|---------------------|-------|
| INTERNAL AREA (SQM) | 44,97 |
| EXTERNAL AREA (SQM) |       |
| PRICE               | SOLD  |

## B316 | 1BD

|                     |       |
|---------------------|-------|
| INTERNAL AREA (SQM) | 44,55 |
| EXTERNAL AREA (SQM) |       |
| PRICE               | SOLD  |

### PARKSIDE RESIDENCES BY SOLUM

DISCLAIMER: Reference to any measured area or definition is in accordance with International Property Measurement Standards (IPMS) published by the International Property Measurement Standards Coalition (IPMSC). The Net Internal Area comprises internal floor space and outdoor areas, excluding internal and external walls, and other structural elements. The Total Sellable Area encompasses all internal and external spaces, including all walls, columns and structural elements. Apartment designs and layouts presented are indicative and subject to change. The specifications are as of the brochure's preparation date and may be adjusted in accordance with permitted variances under apartment sale contracts. Floorplans are not to scale, provided for guidance only, and dimensions are approximate sizes.

## Building B | Fourth Floor



|                     |          |                     |          |                     |          |                     |            |                     |       |                     |          |
|---------------------|----------|---------------------|----------|---------------------|----------|---------------------|------------|---------------------|-------|---------------------|----------|
| <b>B401   2BD</b>   |          | <b>B402   S</b>     |          | <b>B403   1BD</b>   |          | <b>B404   1BD</b>   |            | <b>B405   1BD</b>   |       | <b>B406   1BD</b>   |          |
| INTERNAL AREA (SQM) | 56,87    | INTERNAL AREA (SQM) | 27,06    | INTERNAL AREA (SQM) | 44,97    | INTERNAL AREA (SQM) | 44,50      | INTERNAL AREA (SQM) | 44,50 | INTERNAL AREA (SQM) | 44,97    |
| EXTERNAL AREA (SQM) |          | EXTERNAL AREA (SQM) |          | EXTERNAL AREA (SQM) |          | EXTERNAL AREA (SQM) |            | EXTERNAL AREA (SQM) |       | EXTERNAL AREA (SQM) |          |
| PRICE               | 238.500€ | PRICE               | 121.900€ | PRICE               | 185.500€ | PRICE               | 185.500€   | PRICE               | SOLD  | PRICE               | 185.500€ |
| <b>B407   S</b>     |          | <b>B408   2BD</b>   |          | <b>B409   2BD</b>   |          | <b>B410   3BD</b>   |            | <b>B411   1BD</b>   |       |                     |          |
| INTERNAL AREA (SQM) | 27,06    | INTERNAL AREA (SQM) | 57,07    | INTERNAL AREA (SQM) | 84,05    | INTERNAL AREA (SQM) | 181,35     | INTERNAL AREA (SQM) | 44,50 |                     |          |
| EXTERNAL AREA (SQM) |          | EXTERNAL AREA (SQM) |          | EXTERNAL AREA (SQM) |          | EXTERNAL AREA (SQM) | 58,82      | EXTERNAL AREA (SQM) |       |                     |          |
| PRICE               | SOLD     | PRICE               | SOLD     | PRICE               | 349.800€ | PRICE               | 1.007.000€ | PRICE               | SOLD  |                     |          |

## PARKSIDE RESIDENCES BY SOLUM

DISCLAIMER: Reference to any measured area or definition is in accordance with International Property Measurement Standards (IPMS) published by the International Property Measurement Standards Coalition (IPMSC). The Net Internal Area comprises internal floor space and outdoor areas, excluding internal and external walls, and other structural elements. The Total Sellable Area encompasses all internal and external spaces, including all walls, columns and structural elements. Apartment designs and layouts presented are indicative and subject to change. The specifications are as of the brochure's preparation date and may be adjusted in accordance with permitted variances under apartment sale contracts. Floorplans are not to scale, provided for guidance only, and dimensions are approximate sizes.

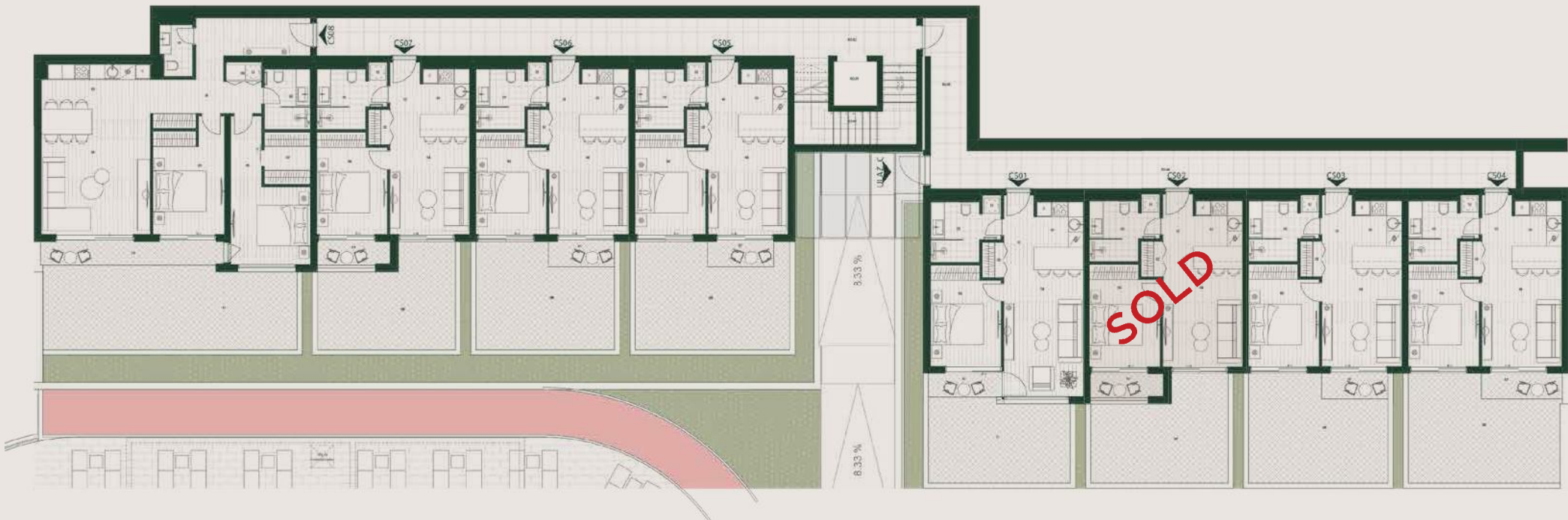


# Building C





# Building C | - Ground Floor



|                     |          |                     |       |                     |          |                     |          |                     |          |                     |          |
|---------------------|----------|---------------------|-------|---------------------|----------|---------------------|----------|---------------------|----------|---------------------|----------|
| <b>CS01   1BD</b>   |          | <b>CS02   1BD</b>   |       | <b>CS03   1BD</b>   |          | <b>CS04   1BD</b>   |          | <b>CS05   1BD</b>   |          | <b>CS06   1BD</b>   |          |
| INTERNAL AREA (SQM) | 45,03    | INTERNAL AREA (SQM) | 41,39 | INTERNAL AREA (SQM) | 41,35    | INTERNAL AREA (SQM) | 41,92    | INTERNAL AREA (SQM) | 41,35    | INTERNAL AREA (SQM) | 41,35    |
| EXTERNAL AREA (SQM) | 18,24    | EXTERNAL AREA (SQM) | 19,77 | EXTERNAL AREA (SQM) | 21,13    | EXTERNAL AREA (SQM) | 23,04    | EXTERNAL AREA (SQM) | 23,88    | EXTERNAL AREA (SQM) | 21,13    |
| PRICE               | 174.900€ | PRICE               | SOLD  | PRICE               | 169.600€ | PRICE               | 169.600€ | PRICE               | 169.600€ | PRICE               | 169.600€ |

|                     |          |                     |          |
|---------------------|----------|---------------------|----------|
| <b>CS07   1BD</b>   |          | <b>CS08   2BD</b>   |          |
| INTERNAL AREA (SQM) | 41,39    | INTERNAL AREA (SQM) | 86,93    |
| EXTERNAL AREA (SQM) | 19,77    | EXTERNAL AREA (SQM) | 33,23    |
| PRICE               | 169.600€ | PRICE               | 339.200€ |

## PARKSIDE RESIDENCES BY SOLUM

DISCLAIMER: Reference to any measured area or definition is in accordance with International Property Measurement Standards (IPMS) published by the International Property Measurement Standards Coalition (IPMSC). The Net Internal Area comprises internal floor space and outdoor areas, excluding internal and external walls, and other structural elements. The Total Sellable Area encompasses all internal and external spaces, including all walls, columns and structural elements. Apartment designs and layouts presented are indicative and subject to change. The specifications are as of the brochure's preparation date and may be adjusted in accordance with permitted variances under apartment sale contracts. Floorplans are not to scale, provided for guidance only, and dimensions are approximate sizes.



# Building C | Ground Floor



|                     |       |                     |       |                     |       |                     |          |                     |       |                     |       |
|---------------------|-------|---------------------|-------|---------------------|-------|---------------------|----------|---------------------|-------|---------------------|-------|
| <b>C001   1BD</b>   |       | <b>C002   1BD</b>   |       | <b>C003   1BD</b>   |       | <b>C004   1BD</b>   |          | <b>C005   1BD</b>   |       | <b>C006   1BD</b>   |       |
| INTERNAL AREA (SQM) | 44,97 | INTERNAL AREA (SQM) | 41,39 | INTERNAL AREA (SQM) | 45,39 | INTERNAL AREA (SQM) | 44,92    | INTERNAL AREA (SQM) | 44,92 | INTERNAL AREA (SQM) | 45,39 |
| EXTERNAL AREA (SQM) |       | EXTERNAL AREA (SQM) |       | EXTERNAL AREA (SQM) |       | EXTERNAL AREA (SQM) |          | EXTERNAL AREA (SQM) |       | EXTERNAL AREA (SQM) |       |
| PRICE               | SOLD  | PRICE               | SOLD  | PRICE               | SOLD  | PRICE               | 153.700€ | PRICE               | SOLD  | PRICE               | SOLD  |

|                     |       |                     |          |
|---------------------|-------|---------------------|----------|
| <b>C007   1BD</b>   |       | <b>C008   2BD</b>   |          |
| INTERNAL AREA (SQM) | 41,39 | INTERNAL AREA (SQM) | 86,96    |
| EXTERNAL AREA (SQM) |       | EXTERNAL AREA (SQM) |          |
| PRICE               | SOLD  | PRICE               | 312.700€ |

## PARKSIDE RESIDENCES BY SOLUM

DISCLAIMER: Reference to any measured area or definition is in accordance with International Property Measurement Standards (IPMS) published by the International Property Measurement Standards Coalition (IPMSC). The Net Internal Area comprises internal floor space and outdoor areas, excluding internal and external walls, and other structural elements. The Total Sellable Area encompasses all internal and external spaces, including all walls, columns and structural elements. Apartment designs and layouts presented are indicative and subject to change. The specifications are as of the brochure's preparation date and may be adjusted in accordance with permitted variances under apartment sale contracts. Floorplans are not to scale, provided for guidance only, and dimensions are approximate sizes.



# Building C | First Floor



| C101   1BD          |          |
|---------------------|----------|
| INTERNAL AREA (SQM) | 44,98    |
| EXTERNAL AREA (SQM) |          |
| PRICE               | 159.000€ |

| C102   1BD          |       |
|---------------------|-------|
| INTERNAL AREA (SQM) | 41,39 |
| EXTERNAL AREA (SQM) |       |
| PRICE               | SOLD  |

| C103   1BD          |       |
|---------------------|-------|
| INTERNAL AREA (SQM) | 45,39 |
| EXTERNAL AREA (SQM) |       |
| PRICE               | SOLD  |

| C104   1BD          |          |
|---------------------|----------|
| INTERNAL AREA (SQM) | 44,92    |
| EXTERNAL AREA (SQM) |          |
| PRICE               | 163.240€ |

| C105   1BD          |       |
|---------------------|-------|
| INTERNAL AREA (SQM) | 44,92 |
| EXTERNAL AREA (SQM) |       |
| PRICE               | SOLD  |

| C106   1BD          |          |
|---------------------|----------|
| INTERNAL AREA (SQM) | 45,39    |
| EXTERNAL AREA (SQM) |          |
| PRICE               | 163.240€ |

| C107   1BD          |          |
|---------------------|----------|
| INTERNAL AREA (SQM) | 41,39    |
| EXTERNAL AREA (SQM) |          |
| PRICE               | 148.400€ |

| C108   2BD          |          |
|---------------------|----------|
| INTERNAL AREA (SQM) | 86,96    |
| EXTERNAL AREA (SQM) |          |
| PRICE               | 328.600€ |

## PARKSIDE RESIDENCES BY SOLUM

DISCLAIMER: Reference to any measured area or definition is in accordance with International Property Measurement Standards (IPMS) published by the International Property Measurement Standards Coalition (IPMSC). The Net Internal Area comprises internal floor space and outdoor areas, excluding internal and external walls, and other structural elements. The Total Sellable Area encompasses all internal and external spaces, including all walls, columns and structural elements. Apartment designs and layouts presented are indicative and subject to change. The specifications are as of the brochure's preparation date and may be adjusted in accordance with permitted variances under apartment sale contracts. Floorplans are not to scale, provided for guidance only, and dimensions are approximate sizes.



# Building C | Second Floor



## C201 | 1BD

|                     |       |
|---------------------|-------|
| INTERNAL AREA (SQM) | 44,97 |
| EXTERNAL AREA (SQM) |       |
| PRICE               | SOLD  |

## C202 | 1BD

|                     |          |
|---------------------|----------|
| INTERNAL AREA (SQM) | 41,40    |
| EXTERNAL AREA (SQM) |          |
| PRICE               | 159.000€ |

## C203 | 1BD

|                     |          |
|---------------------|----------|
| INTERNAL AREA (SQM) | 45,39    |
| EXTERNAL AREA (SQM) |          |
| PRICE               | 172.780€ |

## C204 | 1BD

|                     |          |
|---------------------|----------|
| INTERNAL AREA (SQM) | 44,92    |
| EXTERNAL AREA (SQM) |          |
| PRICE               | 172.780€ |

## C205 | 1BD

|                     |       |
|---------------------|-------|
| INTERNAL AREA (SQM) | 44,92 |
| EXTERNAL AREA (SQM) |       |
| PRICE               | SOLD  |

## C206 | 1BD

|                     |       |
|---------------------|-------|
| INTERNAL AREA (SQM) | 45,39 |
| EXTERNAL AREA (SQM) |       |
| PRICE               | SOLD  |

## C207 | 3BD

|                     |        |
|---------------------|--------|
| INTERNAL AREA (SQM) | 138,67 |
| EXTERNAL AREA (SQM) |        |
| PRICE               | SOLD   |

### PARKSIDE RESIDENCES BY SOLUM

DISCLAIMER: Reference to any measured area or definition is in accordance with International Property Measurement Standards (IPMS) published by the International Property Measurement Standards Coalition (IPMSC). The Net Internal Area comprises internal floor space and outdoor areas, excluding internal and external walls, and other structural elements. The Total Sellable Area encompasses all internal and external spaces, including all walls, columns and structural elements. Apartment designs and layouts presented are indicative and subject to change. The specifications are as of the brochure's preparation date and may be adjusted in accordance with permitted variances under apartment sale contracts. Floorplans are not to scale, provided for guidance only, and dimensions are approximate sizes.

# Building C | Third Floor



## C301 | 2BD

|                     |          |
|---------------------|----------|
| INTERNAL AREA (SQM) | 85,61    |
| EXTERNAL AREA (SQM) |          |
| PRICE               | 360.400€ |

## C302 | 1BD

|                     |          |
|---------------------|----------|
| INTERNAL AREA (SQM) | 45,39    |
| EXTERNAL AREA (SQM) |          |
| PRICE               | 182.320€ |

## C303 | 1BD

|                     |          |
|---------------------|----------|
| INTERNAL AREA (SQM) | 44,92    |
| EXTERNAL AREA (SQM) |          |
| PRICE               | 182.320€ |

## C304 | 1BD

|                     |          |
|---------------------|----------|
| INTERNAL AREA (SQM) | 44,92    |
| EXTERNAL AREA (SQM) |          |
| PRICE               | 182.320€ |

## C305 | 1BD

|                     |          |
|---------------------|----------|
| INTERNAL AREA (SQM) | 45,39    |
| EXTERNAL AREA (SQM) |          |
| PRICE               | 182.320€ |

## C306 | 2BD

|                     |          |
|---------------------|----------|
| INTERNAL AREA (SQM) | 109,07   |
| EXTERNAL AREA (SQM) | 6,50     |
| PRICE               | 530.000€ |

### PARKSIDE RESIDENCES BY SOLUM

DISCLAIMER: Reference to any measured area or definition is in accordance with International Property Measurement Standards (IPMS) published by the International Property Measurement Standards Coalition (IPMSC). The Net Internal Area comprises internal floor space and outdoor areas, excluding internal and external walls, and other structural elements. The Total Sellable Area encompasses all internal and external spaces, including all walls, columns and structural elements. Apartment designs and layouts presented are indicative and subject to change. The specifications are as of the brochure's preparation date and may be adjusted in accordance with permitted variances under apartment sale contracts. Floorplans are not to scale, provided for guidance only, and dimensions are approximate sizes.